

Control from the web with IP-SwitchBox:



IP-SwitchBox800 has 8 outlets for max 16A/230V.



IP-SwitchBox810 has 8 dual pole changing over relays for max 30V/2A, with RJ45 connectors.



IP-SwitchBox802 has 2 outlets for max 16A/230V.

- * Controlled from any web browser, http.
- * Connects to Ethernet, TP.
- * IP address and port is can be configured.
- * Embedded reset-timer for connected equipment.
- * Switch-on delays can be configured.
- * 8+1 usernames/passwords can be configured.
- * A remote controlled serial port, via Telnet or web browser.
- * Optional basic/digest/no authorization.
- * Read/write rights for the users can be configured.
- * Can also be controlled by RS232.

Try it at:
80.252.180.77 !

With IP-SwitchBox you can control, for example, computers and modems. You can then do hard reset on them remotely.

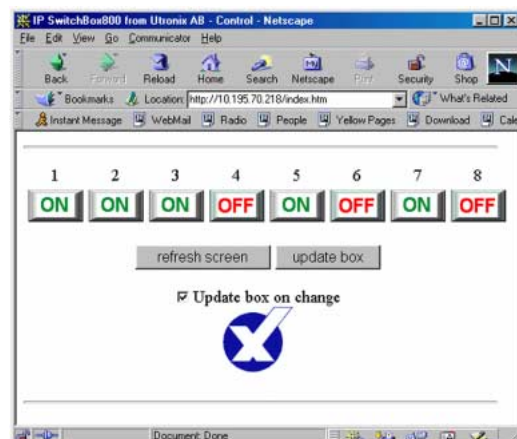
You can of course control other equipments well, for example measurement systems or test arrangements.

And you can control it from anywhere in the world!

The browser looks like this when controlling IP-SwitchBox800.

The outlets are controlled individually.

Choose to have the outlets immediately changed or changed when clicking on update.



UTRONIX

Elektronikutveckling AB

Teknikringen 1, 583 30 Linköping, SWEDEN

Tel: +46 13 212 750 Fax: +46 13 212 725

e-mail: info@utronix.se

www.utronix.se



UTRONIX
Elektronikutveckling AB
www.utronix.se

Telefon: 013 - 21 27 50
Telefax: 013 - 21 27 25
E-mail: info@utronix.se

Teknikringen 1
583 30 Linköping
Sweden

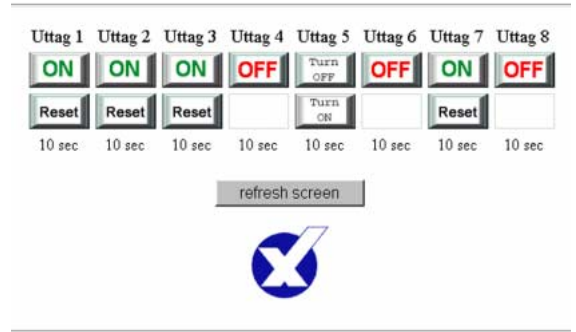
För mer information
kontakta oss direkt.

Reset Timer.

By pushing the reset button the outputs is switched off during the configured time (up to 600s) and is then switched back on again.

The time is controlled by the IP-SwitchBox and is not affected of delays on the Internet.

During the reset time the "ON" button and the "Reset" button is replaced by two buttons that can interrupt the reset, "Turn ON" and "Turn OFF".



Start up sequence.

"Turn on delay" is used to individually delay the output from switching for up to 10 minutes after power failure. This can be used to start equipment in sequence.

User names & Authorization.

You can select user names and passwords for 8 users, admin and telnet. Choose between Basic authorization, Digest authorization or no passwords at all.

IP-address.

The IP-address can be configured as fixed or it can be received with RARP or BOOTP.

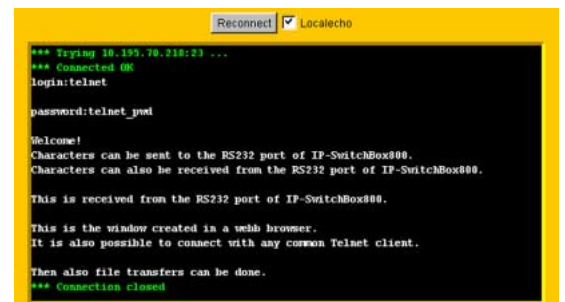
Access rights.

Access rights can be configured individually for up to 8 users. The access rights are specified for each outlet and user. Choose between; no read or write rights, only read or both read and write rights. Admin always has full rights.

A remotely controlled RS232 port.

You can use the RS232 port of the IP-SwitchBox to control devices remotely. For example as consol for a computer, UPS or other RS232 connected device.

You connect to the RS232 port via *Telnet* or via the *web browser*.



Controlling from your own program.

You can control the IP-SwitchBox from your own programs. On the supplied CD there are simple examples in *Perl* and *VisualBasic*

Control and Configuring via RS232.

The IP-SwitchBox can be controlled with simple text commands (ASCII) via a RS232 port. The commands are, for example, "ON1", "ON2", "OFF3", "R4" and "?".

The IP-SwitchBox can be configured via RS232. You then get a small menu where the settings are made.